

VTR 600

HIGH PRECISION AND EFFECTIVENESS FOR POLICE OPERATIONS
IN INSPECTION OF VEHICLES

Installation



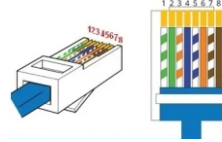
VTR 600

NETWORK CONNECTION

1. Use the Ethernet connector to connect the VTR 600 to the local network.

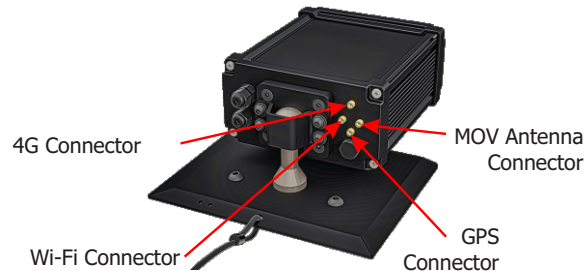


2. Use cable with RJ-45 connector following the pinout of the TIA-568A standard:



3. Check the indication of the operation of the connection through the PC or Switch (link in upstate).
4. Check the installation if it is not indicating that the connection is in operation.

WI-FI, 4G or GPS connection



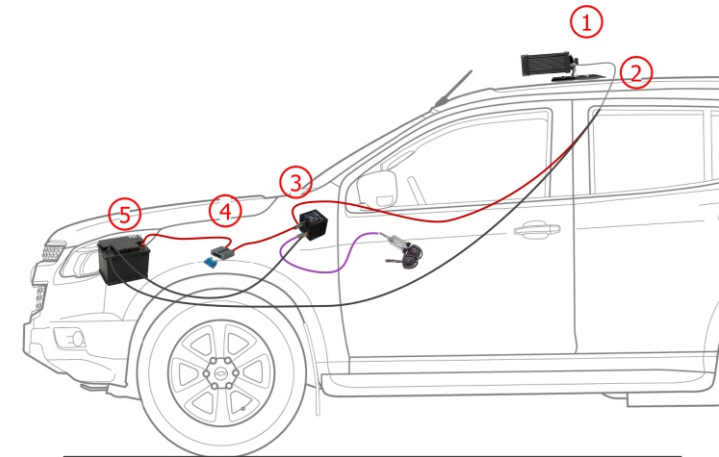
5. Connect the available antennas to the respective SMA connectors 4G, Wi-Fi, GPS and MOV Antenna.

POWER CONNECTION

6. The VTR 600 is powered through a sleeve cable, using a power source in the vehicle's infrastructure (battery or cigarette lighter). The device, when connected to the cigarette lighter, won't function correctly in vehicles equipped with the Start-Stop system. To prevent the unintentional shutdown of the device, the Start-Stop System must be turned off.

BATTERY POWER

7. Make the power connections with an Auxiliary Relay, connected to the vehicle's ignition switch, a fuse, and the battery.
8. Connect the fuse to the battery.
9. Connect the VTR 600 to the Auxiliary Relay and battery via a 12Vdc Power Cable.



Battery Power Connections	
1	VTR 600 fixed to the roof of the vehicle
2	6 way sleeve cable 12Vdc
3	Auxiliary Relay, connected to vehicle ignition switch
4	Fuse
5	Vehicle Battery



The VTR 600 was designed to be installed in a car, able to be directly connected to the vehicle's battery or plugged into the cigarette lighter socket*. Please contact Pumatronix's Technical Support if the power supply voltage is not compatible with 12Vdc batteries.

*When connected to the cigarette lighter socket and if the vehicle has a Start-Stop system, this functionality needs to be deactivated for the VTR 600 to operate properly, as in many vehicles, the Start-Stop feature turns off the cigarette lighter when activated, consequently turning off the equipment.



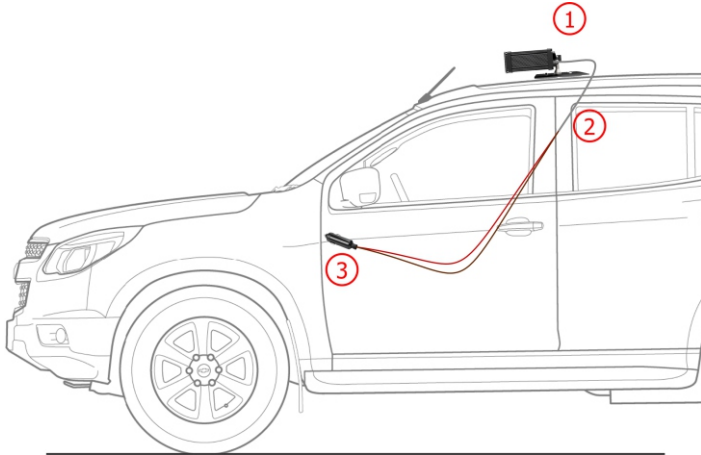
The equipment is factory-configured with network settings for its operation; however, it's possible to modify the IPs through the device's graphical interface. The VTR 600 has a default recovery IP, but if the equipment becomes inaccessible via network routes, it's necessary to contact Pumatronix's technical support.



The device is equipped with a safety cable that must securely attached to the vehicle. The cable length is approximately 100 cm, but it's important to keep it tensioned to a maximum of 60 cm. This precaution is essential to prevent the capture device from being launched in the event of a collision or accident.

SUPPLY BY CIGARETTE LIGHTER

10. Make the power connections with a 12Vdc Power Cable, adapted for Car Cigarette Lighter (connector supplied, but not assembled), connected to the VTR 600.

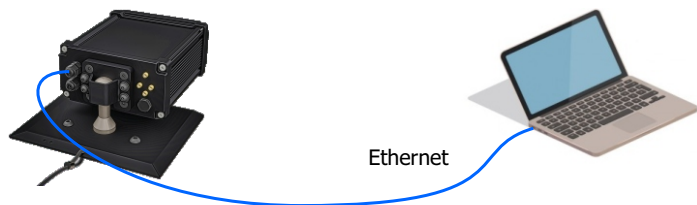


Cigarette Lighter Power Connections	
1	VTR 600 fixed to the roof of the vehicle
2	6 way sleeve cable 12Vdc
3	Plug connected to the Vehicle Cigarette Lighter

! This equipment must be supplied with a direct current (DC) source with a voltage of 12Vdc. Do not connect any of the inputs directly to the mains (AC)!

PARAMETERIZATION OF THE NETWORK INTERFACE

11. Connect the VTR 600 to an auxiliary device disconnected from the local network on which the equipment will be installed, using an Ethernet cable:



12. Access the VTR 600 interface in a Google Chrome browser (version 85 or higher) with factory default data:

IP	192.168.0.254
User	admin
Password	1234

13. Access the menu Equipment > Network, on the Ethernet tab.

14. Modify in the ETH-1 interface the default IP address 192.168.0.254 with network mask 255.255.255.0, considering values different from those that cause conflicts in the existing network:

Conflicting values	
IP Address	Network Mask
192.168.254.x	255.255.255.0
192.168.x.x	255.255.0.0
192.x.x.x	255.0.0.0
	0.0.0.0



The maintenance IP of the VTR 600 (192.168.254.254) is used to recover the connection in extraordinary situations of primary IP loss. Therefore, when manually configuring the equipment's network interface (Ethernet), different values from the maintenance IP must be applied.

15. Click Apply to validate the changes and wait for the equipment's automatic restart.

16. Check the connection and network settings after the restart of the VTR 600 device.

17. Disconnect the VTR 600 from the auxiliary device and connect the equipment to the final installation network

18. Repeat steps 12 to 17 in case of connection loss or IP address conflict.

19. Access with the maintenance IP address 192.168.254.254, in case of any network conflict

WI-FI NETWORK CONFIGURATION

20. Access the device's web interface using the data registered in the network interface setup.

21. Access the Equipment > Network menu in the Wi-Fi tab.

22. Select Station (STA) Operation Mode to connect to an existing Wi-Fi network.

23. Click on the SSID field, and the available nearby Wi-Fi networks for connection are listed for selection.

24. Select the Authentication Protocol to be used: Open (no authentication), WEP, or WPA/WPA2 PSK.

25. Enter the password to access the selected Wi-Fi network.

26. Click the Apply button at the top of the page to validate the entered data.

27. Select Access Point (AP) Operation Mode only when you want the device to be used as an access point to an available WiFi network:

28. Enter the identification data (SSID), Country, Channel, and Authentication Protocol to be applied in the distribution of the Wi-Fi connection.

29. Enter the IP Address and Subnet Mask of the DHCP server, determining the address range for the devices connecting to the Access Point.



Use an IP address for the DHCP server that is different from the one applied for accessing the VTR 600 device to avoid conflicts and network malfunctions.

4G MOBILE NETWORK CONFIGURATION

- 30. Access the device's web interface using the data registered in the network interface setup.
- 31. Go to Equipment > Network in the Mobile tab.
- 32. Click Enable, and the configuration fields will become visible.
- 33. Insert custom data whenever necessary to set up operator information. By default, the information is:
 - a. APN: [http://\[operator name\].com.br](http://[operator name].com.br);
 - b. Username: [\[operator name\]](#);
 - c. Password: [\[operator name\]](#);
- 34. Click Apply to save the network settings.

ACCESS TO ITSCAMPRO MOBILE PLUGIN

35. The plugin containing the ITSCAMPRO Mobile application is installed in the VTR 600 during the factory process, enabling access and management of capture data and reports. Admin access can be done through the default port 9080, indicating the VTR 600's IP.

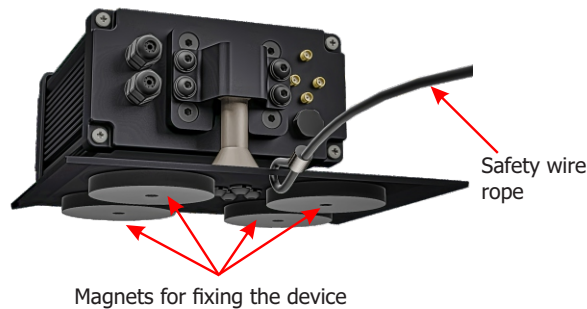
IP	192.168.254.254:9080
User	admin
Password	admin



Admin login is only recommended when there's a need to change parameters and/or load a monitoring list. Other functions of the ITSCAMPRO Mobile plugin can be performed through operator login, which is automatically done without manually inputting data.

VTR 600 FIXING

- 36. The fixation of the VTR 600 is done using a bracket installed at the device's base, with an auxiliary cable, and 4 magnets at the vehicle's roof fixing point.
- 37. Position the VTR 600 on the vehicle's roof according to available space.
- 38. Securely attach the safety steel cable to the vehicle's rack to keep it firm and stable, preventing the VTR 600 from moving and losing its alignment
- 39. Place the magnets on the interior roof of the vehicle, ensuring they are precisely positioned below the VTR 600's bracket.

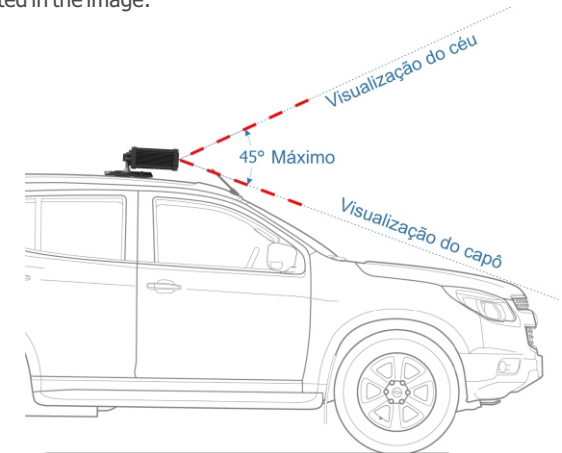


The Safety Steel Cable should remain attached to the vehicle's rack, providing additional security for the VTR 600's fixation on the roof and ensuring greater stability for image framing. Periodically check if the cable is properly attached to the vehicle's rack.

FRAMING ADJUSTMENTS

- 40. Connect the VTR 600 device to a power source (Steps 10 and 11).
- 41. PARAMETERIZE the NETWORK INTERFACE (Steps 12 to 20).
- 42. Disconnect the VTR 600 from the auxiliary device and connect it to the final installation network.

43. Adjust the viewing angle considering the necessary image framing, with the vehicle's hood as the lower limit and the sky as the upper limit, as indicated in the image:



- 44. The ideal capture distance should be between 3 and 15 meters, with the best framing having monitored vehicle plates centralized in the image, and the lane signaling strip remaining visible.
- 45. Position a vehicle plate in the image capture area, if possible, position a vehicle with a plate
- 46. This equipment model has a fixed lens and does not allow user zoom and focus adjustments. These settings are done during the manufacturing process, and the equipment will be delivered pre-adjusted.
- 47. Verify if the system recognizes the displayed plates in the preview image (through the ITSCAMPRO Mobile interface)

CARE AND MAINTENANCE

Perform security measures during the update process:

* **Keep the VTR 600 device powered on at all times during the update, taking necessary measures to prevent it from restarting or shutting down.**

* **Keep the VTR 600 device powered on at all times during the update, taking necessary measures to prevent it from restarting or shutting down.**

* Request the firmware file by filling out the form available in the Technical Support menu on the Pumatronix website

* Access in the Product Manual the step-by-step installation of firmware updates, which can be done through the web interface or Pumatronix software.

WARRANTY TERM

Pumatronix guarantees the product against any defect in material or manufacturing process for a period of 1 year from the date of issuance of the invoice, provided that, at the discretion of its authorized technicians, a defect is found under normal conditions of use.

The replacement of defective parts and execution of services arising from this Warranty will only be carried out in the Authorized Technical Assistance of Pumatronix or a third party expressly indicated by it, where the product must be delivered for repair.

This Warranty will only be valid if the product is accompanied by a Maintenance Form duly completed and without erasures and accompanied by an Invoice.

SITUATIONS WHERE THE PRODUCT LOSES THE WARRANTY

- 1) Use of software/hardware not compatible with the specifications of the Manual;
- 2) Connection of the product to the mains outside the standards established in the product manual and installations that present excessive voltage variation;
- 3) Infiltration of liquids from the opening/closing of the product;
- 4) Damage caused by natural agents (electric discharge, flood, sea spray, excessive exposure to climatic variations, among other factors) or excessive exposure to heat (beyond the limits established in the Manual);
- 5) Use of the product in environments subject to corrosive gases, with excessive moisture and/or dust;
- 6) Show signs of tampering with security seals;
- 7) Present opening and modification signals made by the Customer in product locations not authorized by Pumatronix;
- 8) Damage caused by accidents/falls/vandalism;
- 9) Display tampered and/or removed serial number;
- 10) Damage arising from the transport and packaging of the product by the Customer under conditions incompatible with it;
- 11) Misuse and in disagreement with the Instruction Manual.

PRIVACY POLICY

In accordance with the General Data Protection Law (LGPD) - No. 13.709, of August 14, 2018, this product has programmable functions for the capture and processing of images that may infringe the LGPD when used, together with other equipment, to capture personal data.

The equipment does not collect, use or store personal information, whether sensitive or not, for its operation.

Pumatronix is not responsible for the purposes, use and treatment of the images captured, and the control of the information and forms of operation of the product are the sole decision of the user or purchaser of the product.



* **For more information access the product manual at www.pumatronix.com.br.**

TECHNICAL SUPPORT

+55 41 3016 – 3173 | suporte@pumatronix.com

Movimento em Foco.

